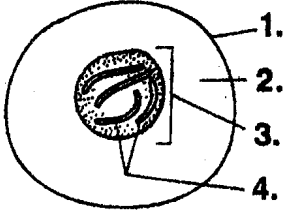
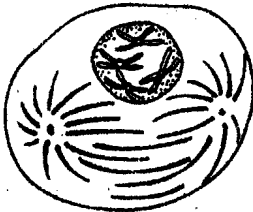
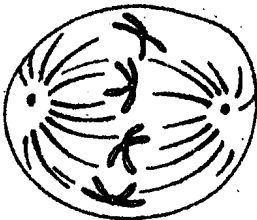
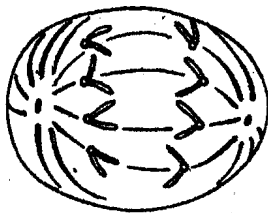
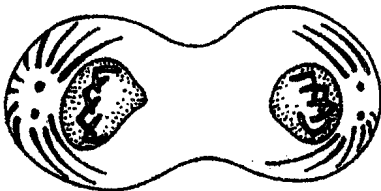
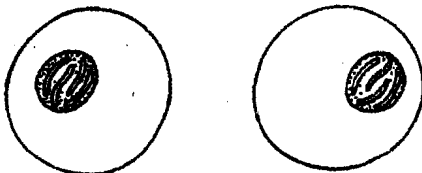


**MITOSIS**

The diagrams below show an animal cell before, during, and after mitosis.

**BEFORE MITOSIS: Interphase****MITOSIS, Stage 1: Prophase****MITOSIS, Stage 2: Metaphase****MITOSIS, Stage 3: Anaphase****MITOSIS, Stage 4: Telophase****AFTER MITOSIS: Two Daughter Cells**

1. Label the cell membrane, cytoplasm, nucleus, and chromosomes.
2. How many chromosomes are present? \_\_\_\_\_
3. In prophase what has happened to the chromosomes since interphase? \_\_\_\_\_  
\_\_\_\_\_
4. Describe any new structure that has formed.  
\_\_\_\_\_  
\_\_\_\_\_
5. In metaphase what has happened to the nucleus? \_\_\_\_\_
6. How have the arrangement and the location of the chromosomes changed? \_\_\_\_\_  
\_\_\_\_\_  
\_\_\_\_\_
7. In anaphase, how have the chromosomes changed since metaphase? \_\_\_\_\_  
\_\_\_\_\_  
\_\_\_\_\_
8. In telophase how have the location and arrangement of the chromosomes changed?  
\_\_\_\_\_  
\_\_\_\_\_  
\_\_\_\_\_
9. After mitosis and cell division are over, how are the two new cells similar to the original cell in interphase? \_\_\_\_\_  
\_\_\_\_\_  
\_\_\_\_\_  
\_\_\_\_\_